



# INTEGRATED HVAC & WATER HEATING



## HOME HEATING & WATER HEATING POWERED BY TANKLESS TECHNOLOGY

### Features of the Hydronic Air Handler

- Low profile 34-inch design is lighter, easier to handle and leaves room for optional accessories
- Left or right side electric connections
- Integrated control board features diagnostics, manages all operational functions and provides hookups for humidifier and electronic air cleaner
- An insulated blower compartment makes it one of the quietest hydronic air handlers on the market today
- Pre-paint galvanized steel cabinet
- Molded permanent filter(s)
- Transformer and control fuse protection
- Solid bottom is standard
- A variety of cooling coils and plenums designed to use with the Hydronic Air Handler are available as optional accessories for air conditioning models

### AIR HANDLER MODEL:

#### RHWB- Series

- Nominal Heating Capacities from 32,000 to 90,000 BTUH [9.38 to 26.39 kW]

### TANKLESS WATER HEATER MODELS:

#### RTG-64DV indoor direct vent and RTG-64X outdoor

- Natural and LP models – 11,000 - 150,000 BTU max.
- 6.4 gal./min at 35° F rise max., 5.6 gal./min. at 45° F rise

#### RTG-84DV indoor direct vent and RTG-84X outdoor

- Natural and LP models – 11,000 - 180,000 BTU max.
- 8.4 gal./min at 35° F rise max., 6.7 gal./min. at 45° F rise

#### RTG-95DV indoor direct vent and RTG-95X outdoor

- Natural and LP models – 11,000 - 199,900 BTU max.
- 9.5 gal./min at 35° F rise max., 7.4 gal./min. at 45° F rise

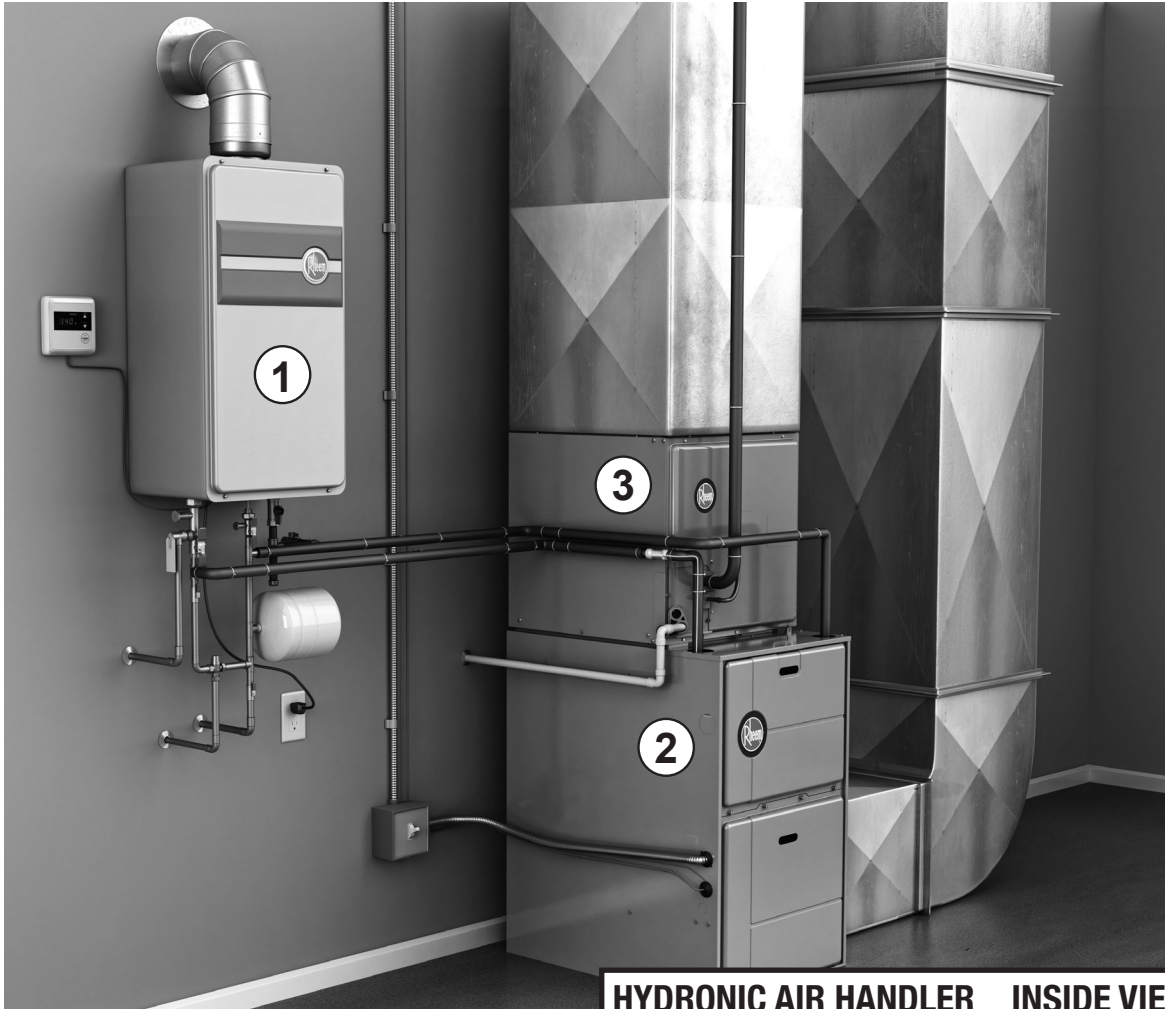
### Features of the Tankless Water Heater

- **Industry best!** Minimum flow rate of .26 GPM, minimum activation flow rate of .40 GPM
- 3"/5" concentric vent system with integrated condensate collector
- Connects to Metal-Fab, Inc., 3"/5" concentric venting without an adapter
- Next generation burner technology
- UMC-117 remote control and 10 ft. of thermostat wire is included
- EZ-Link™ cable available for high demand applications to connect two tankless units to operate as one
- High-altitude capability – up to 9,840 ft. elevation above sea level (no chip required)
- Intelligent electronic controls designed to increase energy efficiency and safety
- Self Diagnostic System





# HOME HEATING & WATER HEATING POWERED BY TANKLESS TECHNOLOGY



## SYSTEM COMPONENTS

### ① TANKLESS WATER HEATER

The Rheem tankless water heater serves two purposes in the hydronic system: it provides continuous hot water for use throughout the home. When a call for heat is made, the tankless water heater also acts as the heat-source for air handler, providing both hot water and heating for the home simultaneously.

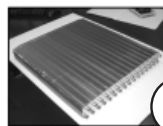
### ② HYDRONIC AIR HANDLER

The hydronic air handler features a hydronic heating coil in place of either electric heating elements or gas-fired heat exchangers. When in heating mode, the hydro pump circulates hot water between the tankless water heater and the hydronic coil.

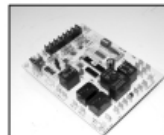
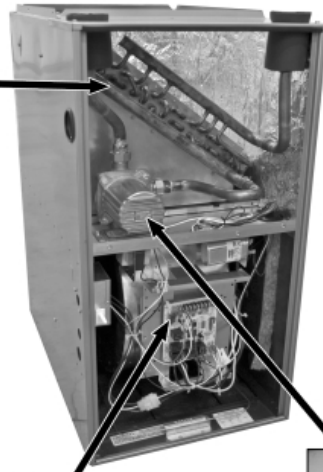
### ③ COOLING COIL

In cooling mode, the cooling coil operates the same as any other Rheem heating and cooling system.

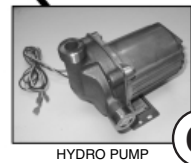
## HYDRONIC AIR HANDLER INSIDE VIEW



HYDRONIC COIL



INTEGRATED CONTROL



HYDRO PUMP

**IMPORTANT: BEFORE PURCHASING THIS APPLIANCE, READ IMPORTANT ENERGY COST AND EFFICIENCY INFORMATION AVAILABLE FROM YOUR RETAILER.**

## HYDRONIC AIR HANDLER PHYSICAL DATA AND SPECIFICATIONS

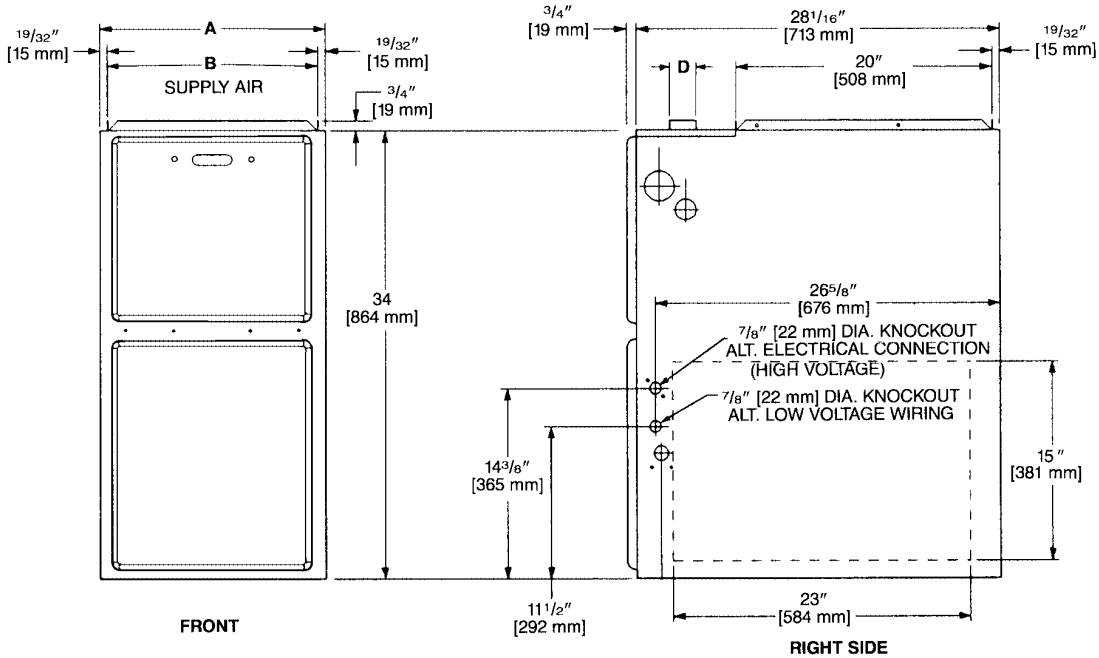
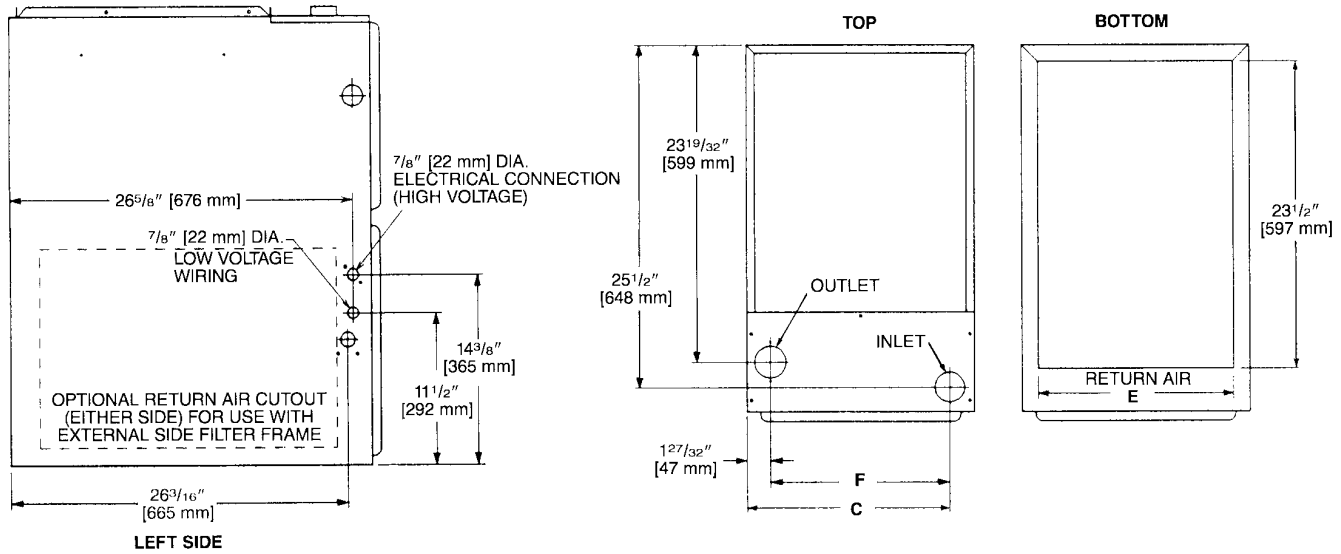
### U.S. and Canadian Models

MODEL NUMBERS	RHWP-06WMP48A	RHWP-08WRP60A	RHWP-10WRP60A
NOMINAL HEATING CAPACITY RANGE (BTUH)	32,000 to 72,000	35,000 to 82,000	35,000 to 90,000
BLOWER (D x W) [mm]	11 x 7 [279 x 178]	11 x 10 [279 x 254]	11 x 10 [279 x 254]
MOTOR HP [W] - SPEEDS - TYPE	3/4 [559] - 4 - PSC	3/4 [559] - 4 - PSC	3/4 [559] - 4 - PSC
MOTOR FULL LOAD AMPS	9.5	9.5	9.5
HEATING SPEED	Med Low	Med High	High
COOLING SPEED	High	High	High
HEAT EXT. STATIC PRESSURE (IN.W.C.) [kPa]	0.8 [.20]	0.8 [.20]	0.8 [.20]
RATED EXT. STATIC PRESSURE (IN.W.C.) [kPa]	0.5 [.12]	0.5 [.12]	0.5 [.12]
HEATING CFM @ .8" [.199 kPa] W.C. ESP [L/s]	1000 [471]	1453 [685]	1818 [858]
COOLING CFM @ .5" [.124 kPa] W.C. ESP [L/s]	1622 [765]	1871 [883]	1973 [931]
TEMPERATURE RISE RANGE °F [°C]	40-70 [22.2-38.9]	35-65 [19.4-36.1]	35-65 [19.4-36.1]
RETURN AIR CABINETS (OPT.) RXGR- FILTER SIZE [mm]	C17B (2) 12" x 16" [305 x 406]	C24B (2) 24" x 16" [609 x 406]	C24B (2) 24" x 16" [609 x 406]
STANDARD, HIGH VELOCITY PERMANENT FILTER (IN.)	15 <sup>3</sup> / <sub>4</sub> x 25 x 1	22 <sup>3</sup> / <sub>4</sub> x 25 x 1	22 <sup>3</sup> / <sub>4</sub> x 25 x 1
APPROX. SHIPPING WEIGHT (LBS) [kg]	118 [53.5]	137 [62.1]	145 [65.7]

## HYDRONIC AIR HANDLER MODEL IDENTIFICATION

R	H	W	B	-06W		M	P	36	A
Brand	Application	Type	Design Series	Heating Output Designation		Blower Size	Variations	Heat/Cool Designation	Revision
				Inlet Water Temp = 150F	Output BTU/HR				
R = Rheem	H = Air handler	W = Water	B = 2nd Series	06W	60,000	M = 11x7	P = PSC	48 = 1500-1700 CFM	A = Rev 0
				08W	80,000	R = 11x10		60 = 1900-2100 CFM	
				10W	90,000				

# HYDRONIC AIR HANDLER DIMENSIONS AND SPECIFICATIONS



MODEL	A	B	C	D	E	F	MINIMUM CLEARANCE (IN.)					SHIP WGTs
							LEFT SIDE	RIGHT SIDE	BACK	TOP	FRONT	
06	17 1/2	16 11/32	15 5/8	3/4 ID	15	13 25/32	0	0	0	1	0*	118
08	24 1/2	23 11/32	22 5/8	3/4 ID	22	20 25/32	0	0	0	1	0*	137
10	24 1/2	23 11/32	22 5/8	3/4 ID	22	20 25/32	0	0	0	1	0*	145

\*A service clearance of at least 24 inches is recommended in front of all air handlers.

## HYDRONIC AIR HANDLER AIR FLOW PERFORMANCE - RHWB MODELS

Model	Blower / Motor HP	Speed	0.1	0.2	0.3	0.4	0.5	0.6	0.7	0.8	0.9	1.0
RHWB-06WMP48A	11x7, 3/4	Low	921	915	886	876	855	841	817	780	734	690
		M-Lo	1189	1180	1179	1137	1131	1102	1072	1030	985	915
		M-Hi	1335	1315	1306	1307	1277	1246	1210	1161	1090	1019
		High	1841	1795	1747	1681	1622	1560	1500	1420	1358	1288
RHWB-08WRP60A	11x10, 3/4	Low	1319	1307	1300	1240	1236	1210	1177	1149	1100	1032
		M-Lo	1484	1480	1471	1463	1418	1385	1359	1314	1246	1166
		M-Hi	1687	1676	1671	1611	1586	1553	1513	1453	1389	1284
		High	1971	1974	1948	1929	1871	1806	1751	1699	1610	1511
RHWB-10WRP60A	11x10, 3/4	Low	1299	1294	1308	1279	1257	1231	1205	1165	1122	1053
		M-Lo	1515	1519	1499	1487	1415	1418	1394	1348	1296	1221
		M-Hi	1684	1695	1693	1663	1620	1586	1569	1514	1451	1365
		High	1954	1971	1974	1982	1973	1944	1917	1818	1775	1700

Note: Units tested without filters in place.

## HYDRONIC AIR HANDLER WITH TANKLESS WATER HEATER PERFORMANCE

Air Handler Model	Tankless Model	Blower Speed	ESP (in. w.c.)	Heating Air Delivery (CFM)	Entering Water Temperature (°F)				
					120	130	140	150	160
RHWB-06WMP48A	RTG-53	High	0.5	1622	32600	39500	47500	N/A	N/A
	RTG-64				40900	47100	51000	N/A	N/A
	RTG-66				40200	46400	54700	63500	71300
	RTG-74				37800	46200	54000	62700	71300
	RTG-84				40000	47800	52100	60300	68100
	RTG-95				37200	45200	50900	59200	66400
RHWB-08WRP60A	RTG-53	Med-High	0.5	1586	35000	41300	50600	N/A	N/A
	RTG-64				42000	50900	53400	N/A	N/A
	RTG-66				40400	50500	56500	65500	73600
	RTG-74				40300	49700	58800	71600	81600
	RTG-84				45800	53300	56900	66900	76000
	RTG-95				45300	53100	60000	70500	80700
RHWB-10WRP60A	RTG-53	Med-High	0.5	1620	35500	44500	53300	N/A	N/A
	RTG-64				40800	48000	53200	N/A	N/A
	RTG-66				48300	57800	62100	71800	83000
	RTG-74				49300	59600	69500	79100	89700
	RTG-84				43200	51800	56900	65100	75400
	RTG-95				48300	58200	61000	71000	79800

Performance is based on the following assumptions:

- 1) an estimated 100 ft. equivalent length of 0.75-inch piping
- 2) 0.50" w.c. of external air static.

# 64 TANKLESS SERIES

## Continuous hot water for 1-2 bathroom homes\*

**RTG-64DV indoor direct vent and RTG-64X outdoor natural and LP models – 11,000 - 150,000 BTU max.**  
6.4 gal./min at 35° F rise max., 5.6 gal./min. at 45° F rise

Limited Warranty:

**12-Year on heat exchanger, 5-Year on parts, 1-Year on labor**

See Residential Warranty Information Brochure for complete warranty information.

- **New!** 3"/5" Concentric Vent System with Integrated Condensate Collector
- Connects to Metal Fab Inc., 3"/5" Concentric Venting without an adapter
- **New!** Next Generation Burner Technology
- **Industry Best!** .26 GPM Minimum Flow Rate, .40 GPM Minimum Activation Flow Rate
- UMC-117 remote control and 10 ft. of thermostat wire is included
- EZ-Link™ cable available for high demand applications to connect two tankless units to operate as one
- **New!** Manifold up to 6 units with an optional MIC-6 manifold control board
- **Exclusive!** All Rheem models can be linked in up to 20 unit manifold installations by using the optional MIC-180 and MICS-180 manifold control assembly
- High-altitude capability – up to 9,840 ft. elevation above sea level (no chip required)
- **Exclusive!** Guardian OFW™ overheat film wrap
- All Rheem tankless models are third-party efficiency certified by GAMA
- Continuous hot water, energy saving and compact, space saving design
- Intelligent electronic controls designed to increase energy efficiency and safety
- Self Diagnostic System
- Digital display shows temperature setting and maintenance codes
- Built-in electric blower
- Supplied with a 120 volt power cord
- Environmentally friendly Low NOx burner meets SCAQMD rule 1146 requirements
- Freeze protection to -30° F

Product appearance may differ.

\* Based on simultaneous showers using 2.5 gallons per minute. Flow rates vary depending on temperature of cold water supply.



## SPECIFICATIONS

DESCRIPTION			FEATURES				ROUGHING IN DIMENSIONS (SHOWN IN INCHES)						ENERGY INFO.		
MODEL NUMBER	GAS INPUT BTU/HR.	TYPE	TEMP. RANGE	WATER FLOW RATE			CONNECTION		HEIGHT	WIDTH	DEPTH	VENT DIAMETER (INCHES)	SHIP. WEIGHT (LBS.)	ENERGY FACTOR	D.O.E. ANN. OP. COST NAT/LP
				GPM @ 77° RISE MAX.	GPM @ 45° RISE MAX.	GPM @ 35° RISE MAX.	WATER	GAS							
<b>RHEEM TANKLESS WATER HEATERS FOR 3 BATHROOM HOMES</b>															
RTG-64DVN	11,000 - 150,000	Indoor Direct Vent	100° to 140° F	3.3	5.6	6.4	3/4	3/4	25-5/8	13-7/8	9-7/8	3 by 5 CONCENTRIC	54	.82	\$223/\$374
RTG-64XN	11,000 - 150,000	Outdoor	100° to 140° F	3.3	5.6	6.4	3/4	3/4	23-5/8	13-7/8	8-7/8	N/A	54	.82	\$223/\$374

# 84 TANKLESS SERIES

## Continuous hot water for 2-3 bathroom homes\*

**RTG-84DV indoor direct vent and RTG-84X outdoor natural and LP models – 11,000 - 180,000 BTU max.**  
8.4 gal./min at 35° F rise max., 6.7 gal./min. at 45° F rise

Limited Warranty:

**12-Year on heat exchanger, 5-Year on parts, 1-Year on labor**

See Residential Warranty Information Brochure for complete warranty information.

- **New!** 3"/5" Concentric Vent System with Integrated Condensate Collector
- Connects to Metal Fab Inc., 3"/5" Concentric Venting without an adapter
- **New!** Next Generation Burner Technology
- **Industry Best!** .26 GPM Minimum Flow Rate, .40 GPM Minimum Activation Flow Rate
- UMC-117 remote control and 10 ft. of thermostat wire is included
- EZ-Link™ cable available for high demand applications to connect two tankless units to operate as one
- **New!** Manifold up to 6 units with an optional MIC-6 manifold control board
- **Exclusive!** All Rheem models can be linked in up to 20 unit manifold installations by using the optional MIC-180 and MICS-180 manifold control assembly
- High-altitude capability – up to 9,840 ft. elevation above sea level (no chip required)
- **Exclusive!** Guardian OFW™ overheat film wrap
- All Rheem tankless models are third-party efficiency certified by GAMA
- Continuous hot water, energy saving and compact, space saving design
- Intelligent electronic controls designed to increase energy efficiency and safety
- Self Diagnostic System
- Digital display shows temperature setting and maintenance codes
- Built-in electric blower
- Supplied with a 120 volt power cord
- Environmentally friendly Low NOx burner meets SCAQMD rule 1146 requirements
- Freeze protection to -30° F

Product appearance may differ.

\* Based on simultaneous showers using 2.5 gallons per minute. Flow rates vary depending on temperature of cold water supply.



## SPECIFICATIONS

DESCRIPTION			FEATURES				ROUGHING IN DIMENSIONS (SHOWN IN INCHES)						ENERGY INFO.		
MODEL NUMBER	GAS INPUT BTU/HR.	TYPE	TEMP. RANGE	WATER FLOW RATE			CONNECTION		HEIGHT	WIDTH	DEPTH	VENT DIAMETER (INCHES)	SHIP. WEIGHT (LBS.)	ENERGY FACTOR	D.O.E. ANN. OP. COST NAT/LP
				GPM @ 77° RISE MAX.	GPM @ 45° RISE MAX.	GPM @ 35° RISE MAX.	WATER	GAS							
<b>RHEEM TANKLESS WATER HEATERS FOR 3 BATHROOM HOMES</b>															
RTG-84DVN	11,000-180,000	Indoor Direct Vent	85° to 140° F	3.9	6.7	8.4	3/4	3/4	25-5/8	13-7/8	9-7/8	3 by 5 CONCENTRIC	54	.82	\$223/\$374
RTG-84XN	11,000-180,000	Outdoor	85° to 140° F	3.9	6.7	8.4	3/4	3/4	23-5/8	13-7/8	8-7/8	N/A	54	.82	\$223/\$374

# 95 TANKLESS SERIES

Continuous hot water for 3 bathroom homes\*

**RTG-95DV indoor direct vent and RTG-95X outdoor natural and LP models – 11,000 - 199,900 BTU max.**

9.5 gal./min at 35° F rise max., 7.4 gal./min. at 45° F rise

Limited Warranty:

**12-Year on heat exchanger, 5-Year on parts, 1-Year on labor**

See Residential Warranty Information Brochure for complete warranty information.

- **New!** 3"/5" Concentric Vent System with Integrated Condensate Collector
- Connects to Metal Fab Inc., 3"/5" Concentric Venting without an adapter
- **New!** Next Generation Burner Technology
- **Industry Best!** .26 GPM Minimum Flow Rate, .40 GPM Minimum Activation Flow Rate
- UMC-117 remote control and 10 ft. of thermostat wire is included
- EZ-Link™ cable available for high demand applications to connect two tankless units to operate as one
- **New!** Manifold up to 6 units with an optional MIC-6 manifold control board
- **Exclusive!** All Rheem models can be linked in up to 20 unit manifold installations by using the optional MIC-180 and MICS-180 manifold control assembly
- High-altitude capability – up to 9,840 ft. elevation above sea level (no chip required)
- **Exclusive!** Guardian OFW™ overheat film wrap
- All Rheem tankless models are third-party efficiency certified by GAMA
- Continuous hot water, energy saving and compact, space saving design
- Intelligent electronic controls designed to increase energy efficiency and safety
- Self Diagnostic System
- Digital display shows temperature setting and maintenance codes
- Built-in electric blower
- Supplied with a 120 volt power cord
- Environmentally friendly Low NOx burner meets SCAQMD rule 1146 requirements
- Freeze protection to -30° F

Product appearance may differ.

\* Based on simultaneous showers using 2.5 gallons per minute. Flow rates vary depending on temperature of cold water supply.



## SPECIFICATIONS

DESCRIPTION			FEATURES				ROUGHING IN DIMENSIONS (SHOWN IN INCHES)						ENERGY INFO.		
MODEL NUMBER	GAS INPUT BTU/HR.	TYPE	TEMP. RANGE	WATER FLOW RATE			CONNECTION		HEIGHT	WIDTH	DEPTH	VENT DIAMETER (INCHES)	SHIP. WEIGHT (LBS.)	ENERGY FACTOR	D.O.E. ANN. OP. COST NAT/LP
				GPM @ 77° RISE MAX.	GPM @ 45° RISE MAX.	GPM @ 35° RISE MAX.	WATER	GAS							
<b>RHEEM TANKLESS WATER HEATERS FOR 3 BATHROOM HOMES</b>															
RTG-95DVN*	11,000-199,900	Indoor Direct Vent	85° to 140° F*	4.3	7.4	9.5	3/4	3/4	25-5/8	13-7/8	9-7/8	3 by 5 CONCENTRIC	54	.82	\$223/\$374
RTG-95XN*	11,000-199,900	Outdoor	85° to 140° F*	4.3	7.4	9.5	3/4	3/4	23-5/8	13-7/8	8-7/8	N/A	54	.82	\$223/\$374



# ACCESSORIES

**RETURN AIR PLENUM:** RXGR-C17B  
RXGR-C24B

**EXTERNAL BOTTOM FILTER RACK:** RXGF-CB

**EXTERNAL SIDE FILTER RACK:** RXGF-CA

FILTER RACK FILTER SIZES* INCHES [mm]		
MODEL	RXGF-CB (BOTTOM)	RXGF-CA (SIDE)
RHWB-06WGAES	15 <sup>3</sup> / <sub>4</sub> x 25 [400 x 635]	15 <sup>3</sup> / <sub>4</sub> x 25 [400 x 635]
RHWB-08WRAJS	22 <sup>3</sup> / <sub>4</sub> x 25 [578 x 635]	15 <sup>3</sup> / <sub>4</sub> x 25 [400 x 635]
RHWB-10WRAJS	22 <sup>3</sup> / <sub>4</sub> x 25 [578 x 635]	15 <sup>3</sup> / <sub>4</sub> x 25 [400 x 635]

\*Filter racks are shipped without filters.  
Filters shipped with hydronic air handler may be used or a suitable 1" [25.4 mm] filter.

## PLENUM DATA FOR "INDOOR COOLING" COILS

Plenum adapters are required in some instances for use on applications when plenum and hydronic air handler size do not match. See Indoor Coil Specification Sheet for Details.








AIR HANDLER WIDTH IN. [mm]	PLENUM WIDTH IN. [mm]	PLENUM ADAPTER	COIL PLENUM
17 <sup>1</sup> / <sub>2</sub> [445]	16 <sup>1</sup> / <sub>4</sub> [413]	RXAA-C185	RXAL-B16BU
17 <sup>1</sup> / <sub>2</sub> [445]	20 <sup>1</sup> / <sub>4</sub> [514]	RXAA-C173	RXAL-B20BU
17 <sup>1</sup> / <sub>2</sub> [445]	21 <sup>5</sup> / <sub>8</sub> [549]	RXAA-C187	RXAL-B21BU
17 <sup>1</sup> / <sub>2</sub> [445]	25 <sup>1</sup> / <sub>4</sub> [641]	RXAA-C174	RXAL-B25BU
24 <sup>1</sup> / <sub>2</sub> [622]	25 <sup>1</sup> / <sub>4</sub> [641]	RXAA-C177	RXAL-B25BU
24 <sup>1</sup> / <sub>2</sub> [622]	21 <sup>5</sup> / <sub>8</sub> [549]	RXAA-C187	RXAL-B21BU

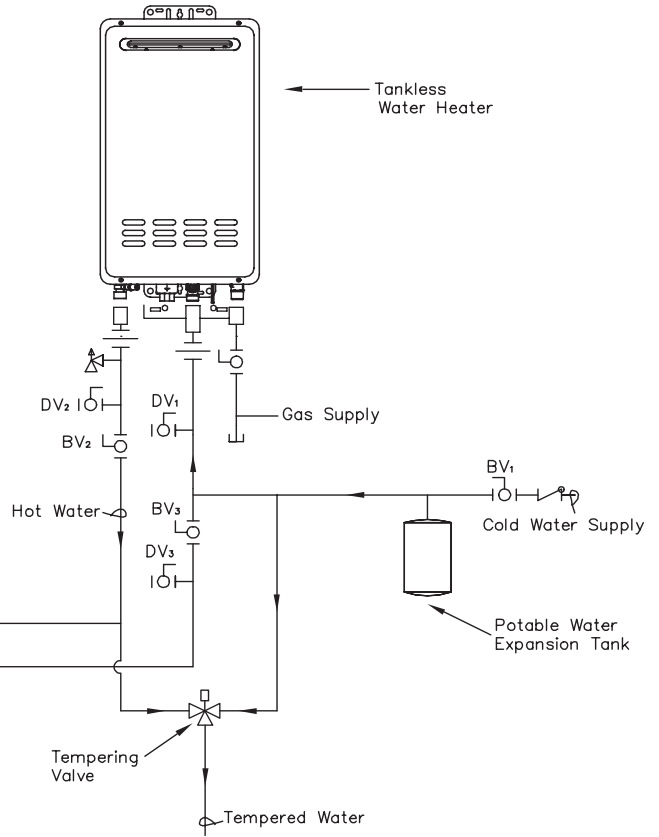
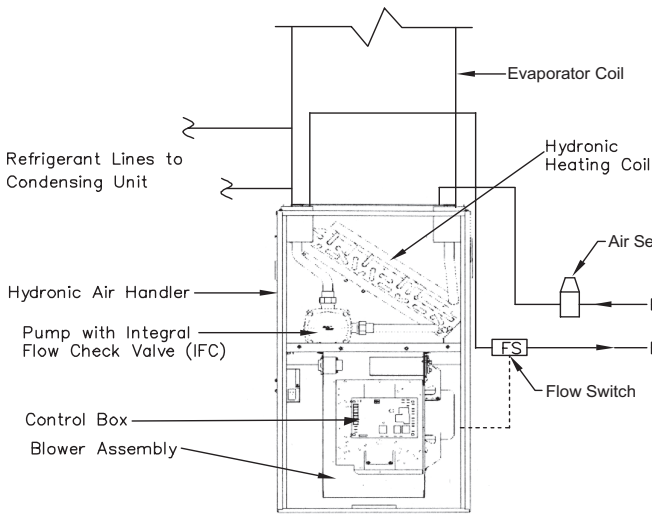
[ ] Designates Metric Conversions

## TANKLESS WATER HEATER ACCESSORIES

Visit RheemTankless.com for a current listing of Rheem Tankless accessories.

# TYPICAL PIPING ARRANGEMENT FOR DIRECT SPACE HEATING AND DOMESTIC WATER SUPPLY WITH TANKLESS

KEY			
	3/4" Ball Valve(BV)		Circulating Pump
	Check Valve		Pressure Relief Valve
	3/4" Union		Tempering Valve
	Drain Valve(DV)	<b>All piping to be 3/4 inch.</b>	





---

# GENERAL TERMS OF LIMITED WARRANTY

Rheem will furnish a replacement for any part of this product which fails in normal use and service within the applicable period stated, in accordance with the terms of the limited warranty.

**\*For Complete Details of the Limited Warranty, Including Applicable Terms and Conditions, See Your Local Installer or Contact the Manufacturer for a Copy.**

## Hydronic Air Handler Warranty Terms

Labor\* . . . . . One (1) Year  
Air Handler Heat Exchanger/Coil\* . . . . . Five (5) Years  
Any Other Part\* . . . . . Five (5) Years

---

**Before proceeding with installation, refer to installation instructions packaged with each model, as well as complying with all Federal, State, Provincial, and Local codes, regulations, and practices.**

**Rheem Heating,  
Cooling and  
Water Heating**

P.O. Box 17010, Fort Smith, AR 72917



---

*"In keeping with its policy of continuous progress and product improvement, Rheem reserves the right to make changes without notice."*